













Golden Flower Challenge

This challenge is about painting 14 flowers using traditional methods inspired from the art of Islamic illumination.

More information can be found on www.islamicillumination.com | March 2020 | Esra Alhamal



Figure 1 : Silk Animal Carpet, second half 16th century



Figure 2: Silk Animal Carpet, second half 16th century



Figure 3: Silk Animal Carpet, second half 16th century



Figure 4: Silk Animal Carpet, second half 16th century



Figure 5: Silk Animal Carpet, second half 16th century



Figure 6: Silk Animal Carpet, second half 16th century



Figure 7: The Emperor's Carpet, second half 16th century



Figure 8: The Seley Carpet, late 16th century



Figure 9 : Silk Panel dates to late 17th–early 18th

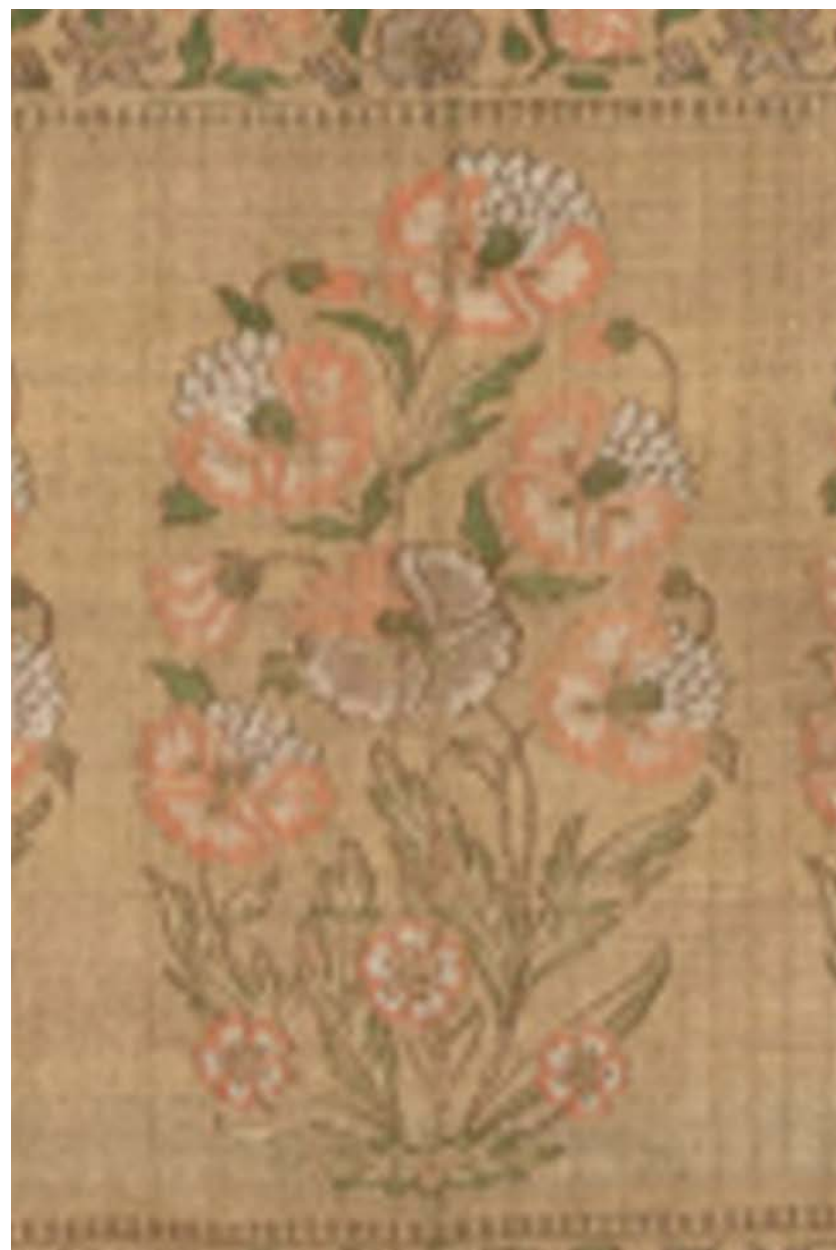


Figure 10: Sash with Flowering Plants, 17th century



Figure 11: Silk sleeveless vestment , 17th century



Figure 12: Safavid Velvet Pane. 17th century



Figure 13: Woven Safavid fabric inspired by book illustration, mid-16th century.



Figure 14: Iranian Textile Fragment, 16th century.

References:

- [1] Silk Animal Carpet made in Iran, probably Kashan, second half 16th century, <https://www.metmuseum.org/toah/works-of-art/14.40.721/>
- [2] Silk Animal Carpet made in Iran, probably Kashan, second half 16th century, <https://www.metmuseum.org/toah/works-of-art/14.40.721/>
- [3] Silk Animal Carpet made in Iran, probably Kashan, second half 16th century, <https://www.metmuseum.org/toah/works-of-art/14.40.721/>
- [4] Silk Animal Carpet made in Iran, probably Kashan, second half 16th century, <https://www.metmuseum.org/toah/works-of-art/14.40.721/>
- [5] Silk Animal Carpet made in Iran, probably Kashan, second half 16th century, <https://www.metmuseum.org/toah/works-of-art/14.40.721/>
- [6] Silk Animal Carpet made in Iran, probably Kashan, second half 16th century, <https://www.metmuseum.org/toah/works-of-art/14.40.721/>
- [7] The Emperor's Carpet, second half 16th century <https://www.metmuseum.org/toah/works-of-art/43.121.1/>
- [8] The Seley Carpet, late 16th century <https://www.metmuseum.org/toah/works-of-art/1978.550/>
- [9] Panel with Rosebush, Birds, and Deer Pattern from Iran dates to late 17th–early 18th century <https://www.metmuseum.org/toah/works-of-art/49.32.99/>
- [10] Sash with Flowering Plants, accessory worn by Safavid royalty and courtiers during the seventeenth century, <https://www.metmuseum.org/toah/works-of-art/33.80.18/>
- [11] Silk sleeveless Christian vestment features a popular bird-and-flower motif, first half 17th century <https://www.metmuseum.org/toah/works-of-art/26.231.2/>
- [12] Safavid Velvet Panel with Flowering Plants for household furnishing first half 17th century <https://www.metmuseum.org/toah/works-of-art/12.72.5/>
- [13] Woven Safavid fabric inspired by book illustration, mid-16th century, <https://www.metmuseum.org/toah/works-of-art/52.20.11>
- [14] Iranian Textile Fragment, 16th century <https://www.metmuseum.org/toah/works-of-art/08.109.3>